



DIANV
BEAUTY & CREATIVE

NANOPLASTY DIANA
informational and technical compendium

What is the NanoGold nanoplasty?

Diana Beauty & Creative developed a **uniquely organic hair treatment** to provide salons with a **safe and formaldehyde-free permanent straightening**. Nanoplasty is an innovative and luxurious treatment that restores the **hair structure and permanently straightens any hair type**. It is the latest taming trend and the new alternative to chemical and keratin straightening. Proven by practice to be an effective method of hair treatment that provides a healthy appearance and long-lasting results.

NANOGOLD

NanoGold an innovative and organic treatment that restores the hair structure and permanently straightens any hair type.

The product contains amino acids, vitamin B, vegan keratin and other beneficial substances that penetrate the cortical layer of the hair and interact at the cellular level under the action of temperature. Due to the plant-based composition, the hair looks healthy, manageable, perfectly straight, and shiny for up to 12 months.

NANOBLUE

NanoBlue is a formaldehyde-free hair straightening treatment that consists of luxurious and natural ingredients to help with hair breakage and deeply nourish it from roots to tips. The product formula contains oils and other moisturising ingredients to soften and smooth the hair as well as cool overly warm, brassy tones. NanoBlue is developed for sensitive hair types i.e. moderately dry, damaged, dyed, or bleached.



Nanoplasty benefits:

- Organic & vegan composition
- Formaldehyde-free and harmless process
- Restored hair health
- Effective and quick straightening results
- Frizz-free, soft, and silky smooth hair for up to 10-12 months
- Improved manageability
- Heat protection
- Increased hair strength
- UV protection
- Safe in pregnancy & lactation
- Cools brassy yellow blondes (NanoBlue technology)



Pre Nano B-tox treats sensitive and damaged hair before nanoplasty treatment.

Preparing hair for nanoplasty will not only help you to get the best results but also make the hair look healthy and shiny for longer. **Pre Nano B-tox** consists of shea butter, hyaluronic acid, and other plant-based ingredients to nourish and moisturise dry hair. Effectively protecting the hair from pollution, heat, and styling.

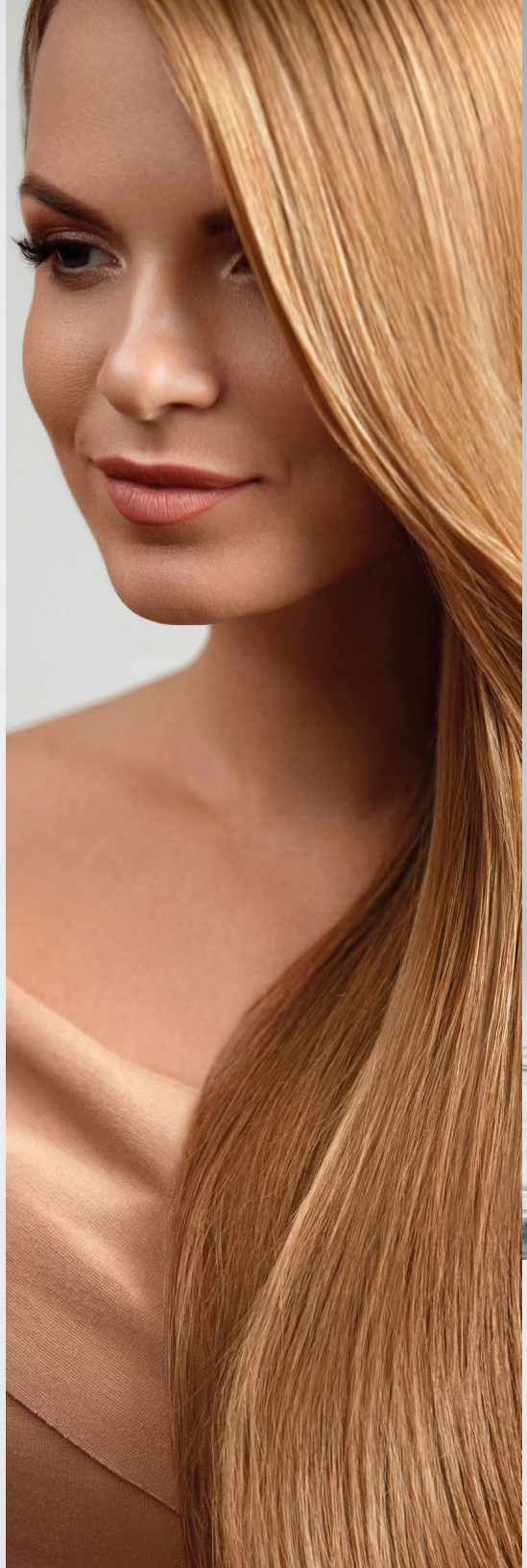
Get NanoPlex to protect the dyed hair for nanoplasty treatment.

NanoPlex seals, protects, and fixes the dry brittle hair. It is a product that is added to the nanoplasty treatment and other hair services. It promises to preserve the integrity of the hair and essentially multiply the bonds within the hair shaft. NanoPlex improves the work of acids allowing to obtain soft, smooth, and silky hair. NanoPlex also helps to avoid colour changing.

Post-treatment Care

Nano Care Shampoo – Avoid most commercial shampoos that use harsh and keratin-dissolving ingredients. Nano Care Shampoo is **salt-free & sulphate-free** so keeping a sleek look and silky feel as long as possible. It doesn't damage the hydro-lipid barrier, scalp, and hair stems. Maximizing the longevity of the straightening treatment.

Nano Care Mask — is a hair care product consisting of natural ingredients to improve the appearance, and **manageability** of hair. Its main purpose is to extend the durability of the nanoplasty and provide a **protective barrier** from environmental factors.



Nano Care Shampoo

Pre Nano B-Tox

Nano Plex



Nano Care Mask

Diana Nano line provides the best nanoplasty products for **safe, vegan, and formaldehyde-free** hair straightening treatments that are proven to work for all hair types and textures (dry, damaged, curly, long, natural, kinky and more). We've designed our Nano products to be used exclusively by hair professionals only who obtained a Diana certificate to ensure that nanoplasty treatment is always performed at the highest level.



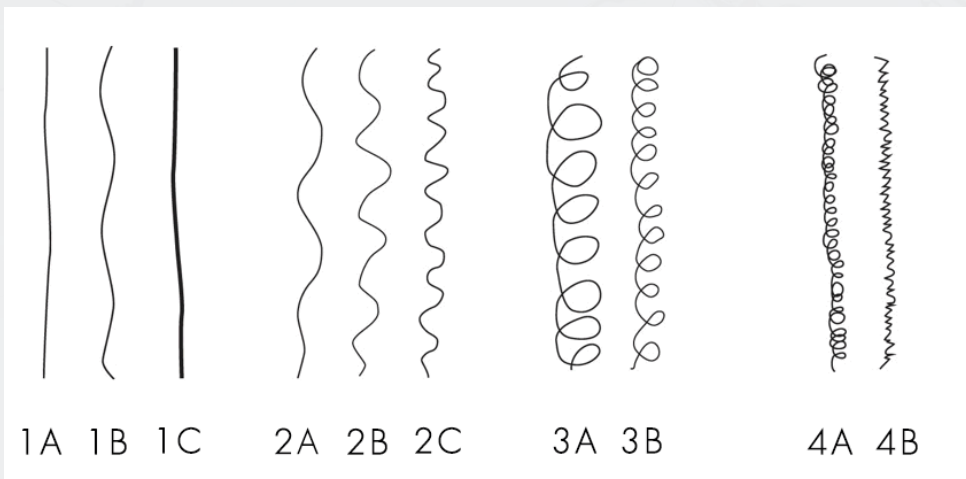
EVALUATION OF THE HAIR TWIST

A very important element of the work of professionals performing straightening treatments is the correct determination of the twist of the client's hair. One of the characteristics of hair is the intensity of the curl or the complete absence of it. Hair can be divided into straight, wavy, and curly.

What determines the hair twist?

Genetic factors play a key role. The curl of our ancestors largely determines the current look of our hair. The hair twist depends, among other things, on the shape of the hair follicle. The more curved the hair follicle, the more curled the hair is. The hair curl may change throughout life, although the changes are not significant. It is most often caused by hormonal factors.

Hair typology



1. Straight:

1A — it is straight hair, a single hair is thin. The roots are very flat, they are easy to put a strain on them.

1B — medium thickness hair with a larger volume than type 1A, because a single hair has a larger diameter.

1C — stiff and thick hair. Such hair is mainly represented by Asian women.

Straight hair in cross-section is round, it quickly returns to its original shape after deformation or curling.

2. Wavy:

2A — a single hair is fine, it is floppy at the base. They are easy to style on both straight and wavy hair. The wave is very gentle, barely visible.

2B — a single hair is of medium thickness, the S-shape is more pronounced than in the case of 2A waves. They tend to curve a lot at the ends, even though they have been styled straight. They froth quite strongly.

2C — a single hair is stiff, thick, clearly visible S-shape. This hair type is the most difficult to straighten. Even after using the straightener, they gain more volume and curl over time.

3. Curly:

In the curly hair section, the letters (A, B, and C) do not present the thickness of a single hair, but the diameter of the rolls. Therefore, 3A, 3B, 3C hair can be thin, medium or thick. Curly hair has clearly defined spirals even when wet. This type of hair tends to be bouncy, voluminous and dry.

3A — hair is curlier than wavy hair, but the curls are still a bit loose. Brushing curls run the risk of having a full of frizz

3B — curls tend to be coarse and dense, resembling corkscrews more than spirals. The circumference of the curl is smaller than the 3A type.

3C — a very small twist, measuring approx. 1 cm in diameter (the diameter of your little finger)

4. Coily (Afro-textured or kinky hair)

4A — very tight spirals, almost invisible.

4B — Z-shaped twist, very small zigzags.

[4C] — very fine, sometimes chaotic twist, they feel like wool, resemble detangled 4B type, i.e. combed "Z".

How to use:

Step 1 Consult

Consult, advise and agree on a plan. See a Client Consultation form in Downloads (online).

Note: If the hair is damaged, dry, coloured, or bleached, it is recommended to apply a Pre Nano Botox hair conditioning treatment before the Nanoplasty treatment. This pre-treatment will help nourish and condition the hair, preparing it for the Nanoplasty treatment and maximising the desired results.

Step 2 Prepare and wash

Wash your client's hair twice using a Nano Shampoo to remove any impurities, dirt and oil.

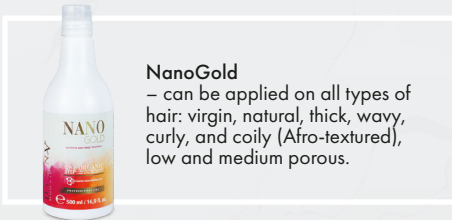
Rinse and towel-dry the hair to remove excess water.

Comb and analyse the hair's porosity and weakness. Look for weak and dry hair.

Introduce the aftercare they'll need to take home (Nano Care shampoo & mask).



Step 3 Choose the right product & settings



NanoGold

– can be applied on all types of hair: virgin, natural, thick, wavy, curly, and coily (Afro-textured), low and medium porous.




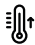








NanoBlue

– can be applied on bleached, chemically treated hair, warm/ brassy blondes.

Mix NanoGold & NanoBlue – can be applied on high porous, grey hair, chemically treated hair, highlights & balayage or hair that is weak, bleached, but also naturally thick and very curly



NanoPlex is an optional additive that makes the treatment penetrate further, prevents against colour changing and fixes the dry brittle hair. It's used on hair that's weak, bleached, damaged, dry or resistant. Use up to 5-15ml NanoPlex per 100ml Nanoplasty.

 HAIR TYPE	 The best temperature for straightening	 The number of passes	 Leave-on time (minutes)	 Hair damp in
 Very porous and fragile hair, bleached, weak and damaged, or hair type 1	160 - 180°C	18 - 20	40	30%
 Medium porous, colour, wavy/slightly curly, hair type 2	180 - 190°C	18 - 20	45 - 50	20%
 Low porous, resistant, thick, normal, virgin, hair type 3	190 - 200°C (colour) 200 - 215°C (virgin)	20 - 25	50	20%
 Thick and strong, low porous, chemically processed, hair type 4	230°C	24 - 28	60	10%
 Afro-textured/ kinky, natural, low porous, hair type 4	230°C	28 - 30	60 - 80	0% - 10%

If the roots are kept the natural colour with bleached on the ends/ or highlights, use a lower heat setting and fewer passes on processed hair and a higher setting on the natural parts of the hair.

In the case of extremely dry and cool blonde hair that has the tendency to turn steely-blue or warm yellow, it is advisable to use the lowest temperature (150 °C). On the other hand, when working with grey hair, a higher heat setting can be used.

For the final finish, give the hair one final pass with the straightener set at 180°C in giant sections. This will create a polished seal to any weak ends, leaving the hair looking and feeling absolutely gorgeous.

Step 4 Apply

Section the hair. Massage a solution into the hair, working in 2-3cm sections, starting at the nape. Comb through. Concentrate on the most porous areas.

Cover with a plastic cap to make sure the hair stays damp while the treatment sinks in for 30-45 minutes.

You can use a Photon laser/ Salon steamer/ Ultrasonic Cold Iron to maximize the effects of the treatment.

IMPORTANT:

APPLY enough product on each section and spread the product evenly

DON'T apply it on the scalp

APPLY the solution on damp hair

NOT WET ENOUGH?

Use a salon spray bottle (the atomizer) to keep the hair damp while applying the product:

ONE SPRAY – 10%

TWO SPRAYS – 20%

THREE SPRAYS – 30%

Step 5 Rinse

To remove 30% of the product, rinse the hair for 20 seconds, next gently squeeze it with a towel. To make sure the right amount of the solution is removed, you can use a spray bottle:

1. Section the hair.
2. Spray each strand. Keep the nozzle close to the hair and spray it in 30%.
3. Remove some product with a disposable towel/ a soft towel.
4. Once there is only 70% of the product on, move on to the next section.

Step 6 Dry

1. Blow-dry the hair until it's 100% dry. Blast it dry quickly before finishing with a brush.

You should never straighten the damp hair as it will maximize the heat to dangerous levels and cause irreversible damage.

1. Step 7 Iron

1. Section the hair.
2. Iron from the roots to the ends in one smooth motion. On the first pass, let each section cool for two seconds before continuing.
3. Start with the bottom layer, pulling each side forward and bending the straightener at an angle of 90 degrees from the base, moving to a parallel position at the ends to not bend the tips.
4. When you're rushing the heat isn't being fully applied to hair. With the help of a comb, go over thin sections with the straightener carefully until hair is entirely straight, shiny, and smooth.
5. Straighten each section until the hair is smooth, silky and shiny (see Step 3).

Using Diana titanium wide plate straightener and a comb, iron the hair slowly in 2-3cm sections. Give the hair one final pass with the irons set at 180°C in giant sections.

Avoid common mistakes and remember to take very tiny sections at a time. The thicker hair is the thinner sections should be taken. Also, run each section of hair several times with the titanium straightener until the hair is glossy and smooth to make sure the product is activated into the hair.

Step 8 Wash with Nano Home Care Shampoo & Mask

- Once you have straightened the hair, leave it to get completely cool before touching it.
- Hair must be rinsed with cool water for 3-5 minutes first.
- Wash the hair with Nano Care shampoo.
- Massage the shampoo into the hair and work up a lather. Let it sit for one to two minutes, then rinse it out. It is recommended to shampoo your client's hair 2-3 times for proper cleansing.
- Gently towel dry, apply Nano Care Mask, and spread it evenly on the ends of the hair. Run your fingers or a wide-tooth comb through the ends of the hair to work in the conditioner.
- Leave it on for 5 to 10 minutes.
- Thoroughly rinse off the mask.
- Blow-dry the hair until it's completely dry. Run a comb through the hair and blow-dry on a medium heat setting. Once it's about 90% dry, switch to the cold air setting and give strands a quick blast to finish.

Step 9 Aftercare

Hair must be rinsed with cool water.

Your client needs to use Nano Care Shampoo & Mask to get maximum results from the treatment and make sure the effects last for the guaranteed time of up to 10 - 12 months.

Check out our website for more information:

a Treatment Aftercare – Client leaflet in Downloads (online)





DIANV
BEAUTY & CREATIVE